



Camping Lido Verbano

WASTE SORTING RULES

ATTENTION! Waste must be thrown inside the Campsite in the specific area indicated with NUMBER 8 (WASTE COLLECTION POINT). Waste is to be categorized into the following types:

PAPER & CARDBOARD



Possibility of being delivered in paper bags or boxes or tied in parcels or using the appropriate containers. It is necessary to reduce the volume of the boxes before delivery.

YES: Newspapers, magazines WITHOUT cellophane wrapping, books, notebooks, office paper, cardboard boxes, corrugated cardboard, paper bags, Tetra Pak, clean paper towels, pizza boxes (greasy part removed), etc.

NO: Plastic-coated, paraffin-coated, bitumen-coated papers, sandpaper, dirty and greasy paper, receipts, baking paper, etc.

PLASTIC



ONLY EMPTY plastic packaging; delivered clean as possible in yellow bags. Always reduce the volume of the bottles.

YES: EXCLUSIVELY EMPTY PACKAGING. Bottles, flacons and dispensers, food packaging, trays and jars, nets for fruit and vegetables, packaging films, crates for fruit and vegetables, blisters and shaped rigid containers, shells and chips in expanded polystyrene, sacks, bags, envelopes, jars for nurserymen, disposable plastic plates and cups, etc.

NO: WHAT IS NOT PLASTIC AND WHICH IS NOT PACKAGING. Tetra Pak, household appliances, housewares, tablecloths, toys, cutlery, building materials, rubber or PVC pipes, painter's sheets, linoleum, electrical materials, paints, dressings, footwear, full bottles, gloves, straws, tealights, glasses, shower mats, garden sheets, shade net, tape, diapers, etc.

TIN CANS



Metallic packaging must be delivered WITHOUT BAG in containers that can be easily moved by the operator. Collection is NOT guaranteed if delivered in plastic bags and if the organic bags are placed on top of the cans.

YES: EXCLUSIVELY EMPTY METALLIC PACKAGING: jars, milk and cans for food, crown caps applied to bottles, canning for packaging, etc.

NO: Jars, tins and cans with residues of the previous contents, jars with danger symbols, small iron or aluminum objects. ABSOLUTELY TO AVOID: combustible gas cans, bags and food packaging which are made of plastic even if silver in colour.

GLASS



Delivered EMPTY and WITHOUT BAG in containers with a maximum capacity of 30 litres. If necessary, use multiple containers and avoid placing organic waste bags on top.

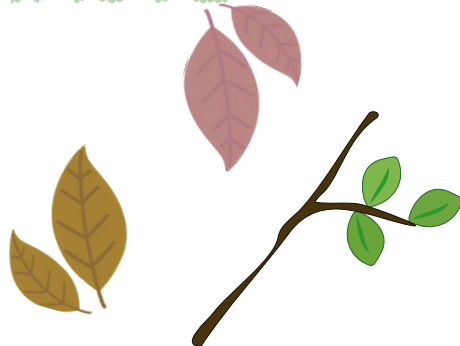
ATTENTION: for safety reasons, collection will not be carried out if placed in plastic bags, cartons or boxes.

YES: EXCLUSIVELY EMPTY GLASS PACKAGING: bottles, jars and containers from which the caps, lids and other metal parts have been removed, demijohns without straw/plastic wrapping, etc.

NO: WHAT IS NOT MADE OF GLASS AND WHICH IS NOT PACKAGING: crystals, car windshields, glass sheets, television screens, light bulbs, neon lights, mirrors, glasses, crystal containers and vases, etc.

ABSOLUTELY TO AVOID: ceramic or porcelain objects, opaline, glass ceramic, lead glass, grinding, Pyrex and microwave containers.

GREEN WASTE



Possibility of directly delivering green waste to the ecological platform in via Castelletto Ticino 70 in Borgo Ticino.

YES: Branches, pruning of trees and hedges, leaves, plant residues, grass clippings and cut flowers.

NO: Plastic and cellophane bags, plastic or earthenware vases, metals, stones, earth and anything else that is not biodegradable.



Camping Lido Verbano

WASTE SORTING RULES

INDISTINCT



To be placed in white bags in which non-separable waste must be inserted.
ATTENTION: the delivery of syringes must take place with the needle protection cap.

YES: waste that cannot be separated into other types: disposable masks and gloves, incandescent light bulbs, dressing materials, PVC pipes, rags, diapers, vacuum cleaner filters, floor rags, doormats, shaving razors, x-rays, synthetic litter, non-compostable coffee capsules, cigarette butts, etc.

NO: All recyclable, bulky or dangerous materials, including household appliances and greenery.

ORGANIC WASTE



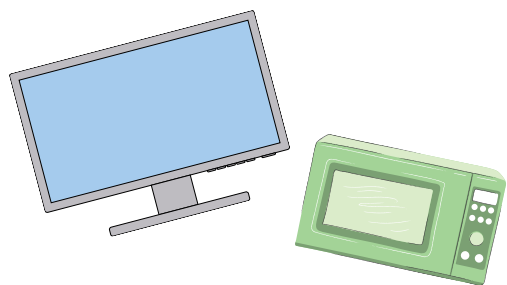
To be carried out by delivery in special biodegradable and compostable bags and placed in the appropriate waste bin with a maximum capacity of 30 litres, equipped with a handle. Avoid placing organic bags on the ground or on top of cans or glass in the same container.

ATTENTION: only MATER-BI BAGS or PAPER BAGS must be used.

YES: Kitchen scraps and leftovers, expired food, greasy tablecloths and paper handkerchiefs, greasy part of the pizza box, infusion filters, coffee grounds, small quantities of house flowers, toothpicks, dog excrement, biodegradable litter, coffee pods compostable coffee, bones and shells, hair, animal fur, egg shells and dried fruit, etc.

NO: Liquid waste, garden waste, synthetic litter, non-biodegradable plastic bags.

BULKY ITEMS and WEEE



To be collected directly at the ecological platform or by booking the "servizio di raccolta ingombranti gratuito" (free bulky waste collection service) at MEDIO NOVARESE AMBIENTE SpA on 800-810310.

YES: Old furniture, refrigerators, washing machines, dishwashers, TVs, monitors, small household appliances, computers, printers and all electrical and electronic equipment and other waste that cannot be disposed of separately.

NO: Toxic waste, industrial waste and hazardous agricultural waste.

OTHER WASTE

- **BATTERIES**, EXPIRED **DRUGS**, **CAR BATTERIES**, USED FOOD **OILS/FATS** and USED **CARTRIDGES** must be taken to the ecological platform of MEDIO NOVARESE AMBIENTE SpA
- **CLOTHES** can be placed in the appropriate street containers in the municipal area and at the ecological platform of MEDIO NOVARESE AMBIENTE SpA
- **WEEE:** i.e. electrical and electronic equipment such as large and small household appliances, electric toys and video games, photovoltaic panels with a power of less than 10 kW... and all other electrical energy appliances. WEEE must **NOT** be disposed of in separate waste collection, but rather at the ecological platform of MEDIO NOVARESE AMBIENTE SpA

ECOLOGICAL PLATFORM OF BORGOTICINO

ADDRESS: via Castelletto Ticino 70, Borgo Ticino (NO)

WHAT TO BRING: paints, paper, cardboard, sheet glass, metals, household greenery, bulky items, inert waste in modest quantities, wood, tires without rims, car batteries, batteries, medicines, mineral and vegetable oils, clothing, WEEE and printer cartridges exhausted.

OPENING DAYS AND HOURS

SUMMER PERIOD (MAY 1st - OCTOBER 31th)		
Mon: 2.00pm - 5.15pm	Tue: 9.00am - 11.00 am / 2.00pm -5.15pm	Wed - Sat: 8.30am- 11.00 am/ 2.00pm - 5.15pm
WINTER PERIOD (NOVEMBER 1st - APRIL 30th)		
Mon: 1.30pm - 4.45pm	Tue: 9.00am - 11.00 am / 1.30pm - 4.45pm	Wed - Sat: 8.30am- 11.00 am/ 1.30pm - 4.45pm

For information, call Medio Novarese Ambiente Spa on +**39 800-810310**

NOTICE: for inert waste, disposal costs are borne by the citizen.